

**Report of: Jane Maxwell, East North East Area Leader**

**Report to: Outer North East Community Committee – Alwoodley, Harewood and Wetherby Wards**

**Report author: Andrew Birkbeck, Localities Programme Manager, Tel: 0113 3367642**

**Date: 19<sup>th</sup> March 2018**

**To Note**

## **Community Committee Update Report**

---

### **Purpose of report**

1. This report provides an update on the on-going work programme of Outer North East Community Committee.

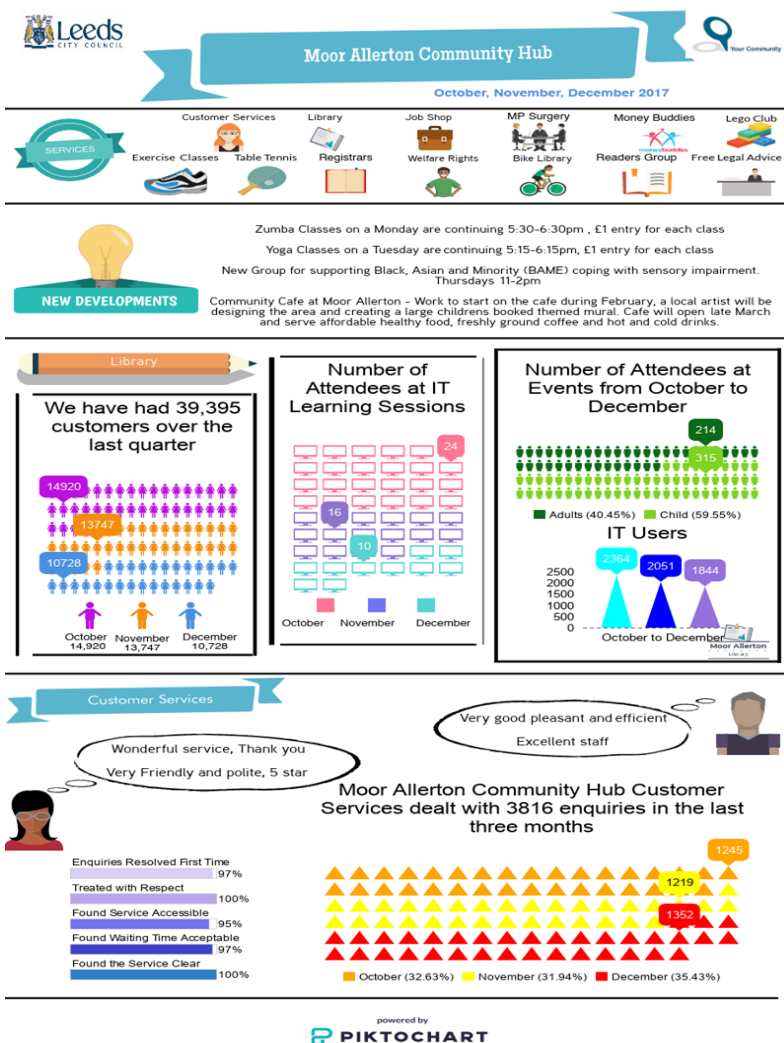
### **Main issues**

2. Tasking meetings for both Alwoodley and Harewood & Wetherby Wards continue to regularly take place.
3. Tasking meetings are an opportunity for the Police, Ward Members, council officers and partner agencies to discuss and co-create actions to address emerging and on-going crime and environmental issues in the local area.
4. For all the latest information and developments regarding community safety matters in the Outer North East area please visit:  
<https://www.facebook.com/WYPLeedsOuterNorthEast/?fref=ts>
5. The Outer North East Environment Sub Group met on 23<sup>rd</sup> November 2017. The sub group is chaired by Cllr Gerald Wilkinson, the Outer North East Community Champion for Environmental Services.
6. Ward Members, officers from the Communities Team, Housing Leeds, East North East Locality Team, Parks and Countryside and Waste Management Services were all in attendance.
7. The minutes of the Outer North East Environment Sub Group meeting held on 23<sup>rd</sup> November are attached as **Appendix A**.

8. A series of Ward Member meetings have been held since the last meeting of the Community Committee.
9. Alwoodley Ward Members met on both 5<sup>th</sup> February and 12<sup>th</sup> March 2018. Local issues discussed included highways maintenance, greenspace, the environment and Wellbeing finance.
10. Harewood Ward Members met on 11<sup>th</sup> February 2018. As well as Wellbeing finance, subjects for discussion included traffic management issues and highways maintenance investment in the Ward.
11. Wetherby Ward Members met on 26<sup>th</sup> January 2018. Items discussed included the role of Housing Leeds, highways maintenance and Wellbeing finance.
12. An Emmerdale Stakeholder Panel meeting was held on 29<sup>th</sup> November 2017. This panel considered three projects that had been put forward by eligible groups and organisations since the last meeting in September. The panel made the following decisions:

<b>Name of project</b>	<b>Applicant</b>	<b>Amount applied for (£)</b>	<b>Panel decision (including amount awarded)</b>
Playground Refurbishment	Thorner Parish Council	£10,000	The panel supported a £10,000 grant
Bingley Ginnel Restoration	Bardsey Parish Council	£11,160	A £10,000 contribution is approved in principle but some aspects of the project need further clarification.
Cottage in the Wall enabling works	Harewood Estate	£50,000 (approx.) + VAT	Panel agreed to support the enabling works to allow a survey to take place.  £50,000 (approx.) + VAT but more detail needed on exact price.  Harewood Estate to submit invoice and also send survey report to Phil Ward, Conservation Officer at LCC.

13. The purpose of the panel is to help steer and allocate the S106 funding stream that has arisen to help mitigate any impact that the Emmerdale film set may have. The Chair, Cllr Rachel Procter, has resolved to utilise this funding stream to its full potential over the coming years to best benefit not only the Harewood estate and its environs, but also the wider Harewood Ward.
14. The Alwoodley Youth Summit is scheduled to take place on Friday 23<sup>rd</sup> March. Hosted and co-designed by Cllr Dan Cohen (Community Committee Champion for children and young people) and officers from the council's Voice and Influence Team, the event is to take place at Moor Allerton High School and will be attended by pupils from six Alwoodley Schools. The objective of the event is to help steer the Youth Activity Fund for Alwoodley Ward for 2018/19 as well as explaining the role of Councillors and how young people can get involved in local democracy.
15. Work at the Moor Allerton Hub is continuing to flourish. The infographic below highlights some of activity that has taken place there during the winter period (October – December 2017).



16. Leeds City Council are seeking the views of local communities on secondary school provision in the Outer North East area, which will then be shared with the Department

for Education before a decision is made on the academy application by Boston Spa School. As this may lead to significant long term changes to secondary education provision in the area it is clearly important that families have the chance to express their views.

17. An online public engagement exercise has commenced from Wednesday 28<sup>th</sup> February and runs until midnight on Sunday 25<sup>th</sup> March. The Engagement Survey document, containing background information, data on finance and pupil numbers, can be found on the Leeds City Council website: <https://www.leeds.gov.uk/residents/children-families-and-carers/schools-and-learning/school-place-planning/current-consultation> An associated online survey, which provides interested parties with the opportunity to share their views on how secondary school places in the area should be organised, can also be found on the same webpage.
18. At the time of writing the Outer North East Facebook page has 200 Likes. Since the December Community Committee, the Communities Team have posted over 80 items that have had a reach of over 4,000 (although it should be noted that this will include a high proportion of re-visits to site from the same people).
19. Since the last meeting in December, members of the Communities Team (ENE) have been managing and populating the Facebook page that has been established for the Outer North East Community Committee as a means for communicating with partners, 3<sup>rd</sup> sector organisations and local residents.
20. Posts on both Twitter and Facebook are on a variety of subjects relevant to the Outer North East area including job opportunities, funding support, open days, local service provision, consultations and sporting activities. For more details visit:
  - Link to the Facebook Page for the Inner East Community Committee: <https://www.facebook.com/LCCOuterNE>
  - Link to the Your Community Twitter Page: [https://twitter.com/@\\_YourCommunity](https://twitter.com/@_YourCommunity)
21. An example of the potential of social media as a means for engagement is highlighted below. This particular post from the 25<sup>th</sup> January 2018 reached 353 people.

**Leeds City Council Outer North East Community Committee**  
Published by Preet Matharu [?] · 25 January · €

If you like challenge, variety of work, are motivated and want to work with older people then this could be the job for you. To apply or for more information see <https://jobs.leeds.gov.uk/housing-resources-housi.../26244.job>

Sheltered Support Officers deliver housing support to older people living in Leeds City Council housing schemes. This includes helping with viewings before a tenant moves in, developing and reviewing support plans, regular weekday visiting and organising activities that help maintain people's health and wellbeing.

We have a number of full and part time roles mostly in north east Leeds - Wetherby and surrounding villages. If you like the challenge, variety of work are motivated and want to work with older people then this could be the job for you.

**Do you want to earn a living helping other people?**

Sheltered Support Officers deliver housing related support for older people living in council housing. This includes helping with tenant viewings, developing and reviewing support plans, regular weekday visiting and organising activities that help maintain people's health and wellbeing.

**We have vacancies across Leeds for**

**Sheltered Support Officers £18,070 to £20,138**

37 hour week with substantial benefits including 24 days leave plus Bank Holidays and generous West Yorkshire Pension Fund package

For more information please contact 07595 213800

**Sheltered Support Officer B3 x5**

There are currently 4 full time positions- 37 hours and 1 part-time position -18.5 ...

JOBS.LEEDS.GOV.UK

353 people reached

Boost Post

Like Comment Share

## **Conclusion**

22. There are a number of actions on-going to achieve the Community Committee priorities and fulfil its work programme but despite this, the Community Committee recognises that there is still a significant amount of work to be done.

## **Recommendations**

23. That Members note the contents of the report and make comment where appropriate.